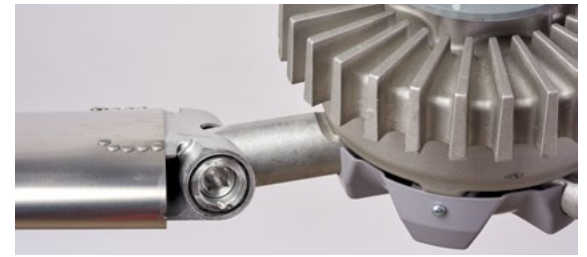


Revolution® 150 Series

High-Volume, Low-Speed (HVLS) Fan

Climate control with direct drive technology.



Performance

- » Improve productivity by providing evaporative cooling
- » Exclusive Propell-Aire™ aluminum blades with standard mill finish. Incorporates tilt, taper, and twist to produce consistent airflow across the entire length of the blade, eliminating pockets of stagnant air under the center of the fan
- » Covers 22,000 sq. ft., moving air up to 85 ft. in all directions from the center of the fan

Construction

- » Vibration-dampening material is incorporated to reduce stress to the hub by 50 to 75%
- » The blade and hub are balanced for smooth, efficient performance
- » Maximum weight is 250 lbs. Actual weight varies according to the fan size and mounting style
- » Backed by Rite-Hite's 50 year track record as an industrial manufacturer

NOTE: Fan assembly is pre-wired with a NEMA twist-lock plug and 5' cord.

Wireless Controls

- » Customizable 7-day scheduling. Manage up to 24 fans from the wireless touch screen control station
- » Standard Ethernet connectivity allows remote access to fan controls from a PC or mobile device

Warranties

- » 3 year parts & 3 year labor warranty
- » 10 year structural integrity warranty
- » Lifetime warranty on workmanship of blades and interlocking fan arms
- » 1 year customer satisfaction money-back guarantee

Direct Drive Motor

- » Motor is nearly silent operating between 38 to 42 dBA, depending on fan speed. Ideal for environments with sound concerns
- » Direct drive design does not require oil
- » Simplified design reduces installation time and costs

Safety

- » All fans feature a hub to motor connection with redundant safety cable, stabilizing cables, and mounting bracket
- » A unique safety system is provided for back-up security for the motor to hub connection

NOTE: Safely integrate a low voltage stop signal from the fire panel to comply with NFPA 13 with no exposure to high voltage.



Fan-Commander® 2.0

SPECIFICATIONS/SURVEY

Date _____
 Company Name _____
 Address _____
 City _____
 State _____ Zip Code _____
 Representative _____
 Salesperson _____
 Quantity _____ Signature _____

Fan Diameter

16' (4880 mm) Diameter
 20' (6100 mm) Diameter
 24' (7320 mm) Diameter

Voltage/Phase

200-240V / 1 phase
 200-240V / 3 phase
 277V / 1 phase
 400-480V / 3 phase

Fan Drop Height

3'6" (1065 mm)
 4'0" (1219 mm)
 4'6" (1371 mm)
 5'0" (1524 mm)
 5'6" (1676 mm)
 6'0" (1828 mm)
 6'6" (1981 mm)
 7'0" (2134 mm)
 7'6" (2286 mm)
 8'0" (2433 mm)

600 Volt Transformer

Typically required for Canada

No
 Yes (requires 400-480V / 3 phase)

EMC Compliance

No
 Yes

Shipment Destination

North America

Mounting Option

Standard I-Beam Bracket
 Truss Kit
 Purlin Kit
 Laminated Beam Kit

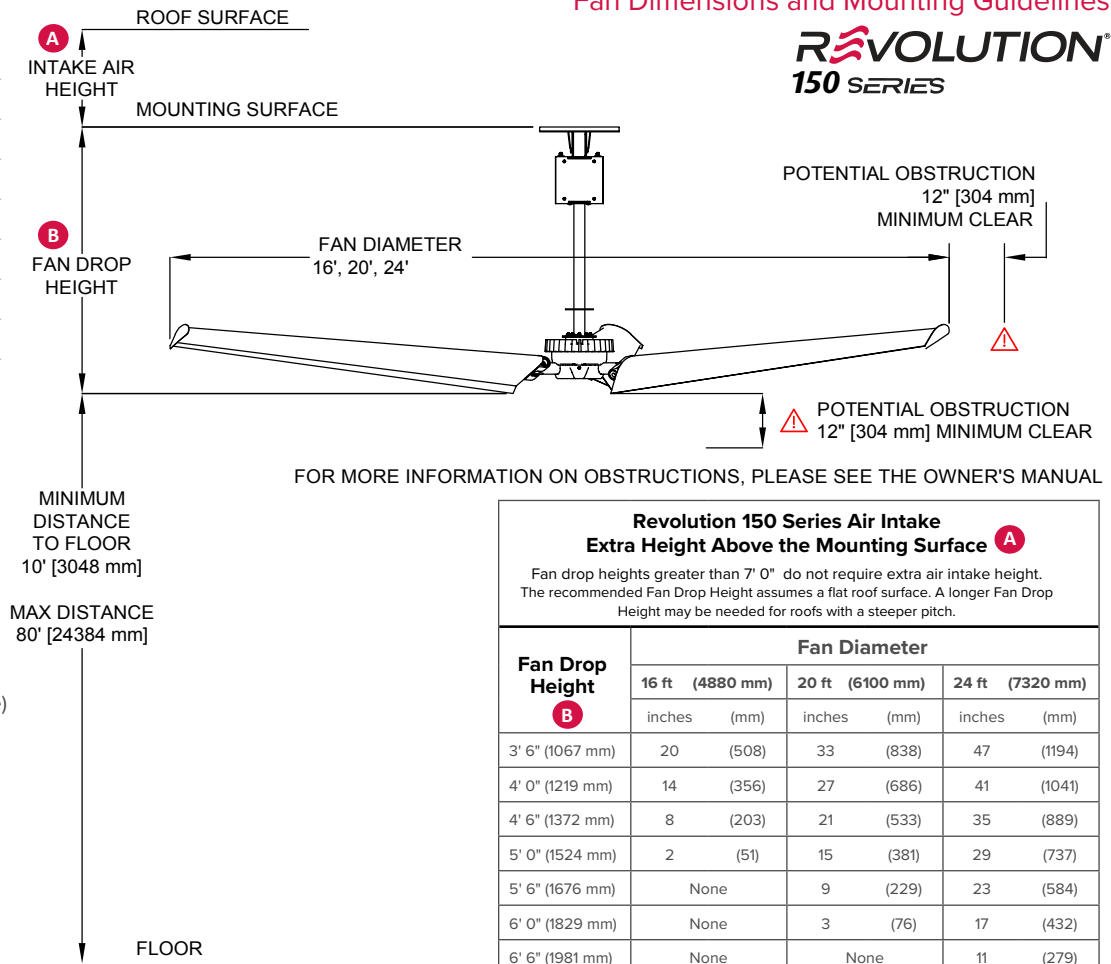
Custom Color: Blades and Hubs

No. Standard Mill Finish
 Yes. RAL K5# _____ (20% gloss)

Note: Controls are not included. Please order Fan-Commander® 2.0 separately.

Fan Dimensions and Mounting Guidelines

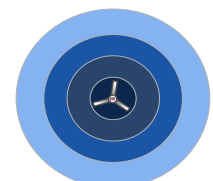
REVOLUTION®
150 SERIES



FOR MORE INFORMATION ON OBSTRUCTIONS, PLEASE SEE THE OWNER'S MANUAL

| Revolution 150 Series Air Intake Extra Height Above the Mounting Surface A | | | | | | |
|---|-----------------|-------|-----------------|-------|-----------------|--------|
| Fan drop heights greater than 7' 0" do not require extra air intake height. The recommended Fan Drop Height assumes a flat roof surface. A longer Fan Drop Height may be needed for roofs with a steeper pitch. | | | | | | |
| Fan Drop Height B | Fan Diameter | | | | | |
| | 16 ft (4880 mm) | | 20 ft (6100 mm) | | 24 ft (7320 mm) | |
| | inches | (mm) | inches | (mm) | inches | (mm) |
| 3' 6" (1067 mm) | 20 | (508) | 33 | (838) | 47 | (1194) |
| 4' 0" (1219 mm) | 14 | (356) | 27 | (686) | 41 | (1041) |
| 4' 6" (1372 mm) | 8 | (203) | 21 | (533) | 35 | (889) |
| 5' 0" (1524 mm) | 2 | (51) | 15 | (381) | 29 | (737) |
| 5' 6" (1676 mm) | None | | 9 | (229) | 23 | (584) |
| 6' 0" (1829 mm) | None | | 3 | (76) | 17 | (432) |
| 6' 6" (1981 mm) | None | | None | | 11 | (279) |
| 7' 0" (2134 mm) | None | | None | | 5 | (127) |

| Distance From Fan | Air Speed Miles Per Hour | 24' | | 20' | | 16' | |
|---------------------|--------------------------|------------|------------|------------|------------|------------|------------|
| | | Full Speed | Half Speed | Full Speed | Half Speed | Full Speed | Half Speed |
| 25' From Fan Center | Zone 1 | 6.4 | 3.2 | 6.4 | 3.6 | 6.4 | 3.4 |
| 50' From Fan Center | Zone 2 | 2.5 | 1.3 | 2.5 | 1.6 | 2.2 | 1.6 |
| 75' From Fan Center | Zone 3 | .8 | .3 | .7 | .4 | .6 | .4 |
| 85' From Fan Center | Zone 4 | .4 | .3 | .4 | .3 | .4 | .3 |



8900 NORTH ARBON DRIVE
 MILWAUKEE, WI 53223, USA

P 414-355-2600 (800-456-0600)
 F 414-355-9248

Rite-Hite®, Revolution®, Propell-Aire™ and Fan-Commander® are trademarks of Rite-Hite Holding Corporation. Rite-Hite products are covered by one or more U.S. patents with other U.S. and foreign patents pending. The information herein is provided as a general reference only regarding the use of the applicable products. The specifications stated here are subject to change. Manufactured by: Rite-Hite Engineered Solutions Group

WWW.RITEHITE.COM