

Rite-Vu™ Light Communication Systems

Clear concise communication at the loading dock with Rite-Vu™ Light Communication Systems.



NEMA 4X Dok-Lok®-Style Inside Control Box
*Panel cover decal may vary by model number and options selected

Increase Safety and Productivity

Enhancing communication at the loading dock increases safety and can play a key role in helping achieve productivity goals.

Light Communication Systems clearly inform dock personnel when they can safely enter or exit a trailer and inform truck drivers when it is safe to depart.

Available Light Communication Systems

Rite-Hite® offers two Light Communication Systems to meet various budgets and to help address both current and potential needs.

Each system features an inside communication/control box, outside communication lights and interior/exterior instructional signs.

Traffic-Style Light Communication System

» Offers basic communication between dock personnel inside the building and truck drivers outside of the building

» Dock attendant controls communication with a three-position toggle switch (red, green, off)

» Allows for limited integration of additional/future equipment

Dok-Lok®-Style Light Communication System

» Offers enhanced communication between dock personnel inside the building and truck drivers outside of the building

» Dock attendant controls communication with a NEMA 4X rated user interface with membrane switch buttons

» Allows for full integration of additional/future equipment and interlocked sequence of operations

» When interlocked with equipment, helps to ensure that safety protocols and processes are followed

Rite-Vu™ Line of Sight Light Communication

Dok-Lok®-Style Light Communication Systems offer the flexibility to add line of sight verification of the light communication system status.

Corner-Vu™ mounts above the upper corners of the dock door opening and provides line of sight light communication system status to dock personnel before entering the trailer

Leveler-Vu™ mounts at the rear sides of the leveler and provides line of sight light communication status to dock personnel while exiting the trailer

Opti-Vu™ An intuitive digital tool for data-driven decision making

More than just sensors and data, the Opti-Vu® platform monitors equipment, captures events, synchronizes vital information and facilitates data-driven behavioral and process change (*subscription & additional hardware required*)



Corner-Vu™ top right corner/Leveler-Vu™ lower left corner

Specifications

Dok-Lok®-Style Light Communication System

NEMA 4X Controller Dimensions: 12.25" x 10.25" x 5.5" (L x W x H)
 Outside Light Box Dimensions: 12.25" x 6.25" x 3.75" (L x W x H)
 Electrical: 110/1/60, LED light bulbs, all components UL listed



Left: Dok-Lok®-Style Inside Controls
 *Panel cover decal may vary by model number and options selected
 Middle: Outside Communication Lights
 Interior/Exterior Instructional Signs

Traffic-Style Light Communication System

Three-position Toggle Dimensions: 12.25" x 6.25" x 3.75" (L x W x H)
 Outside Light Box Dimensions: 12.25" x 6.25" x 3.75" (L x W x H)
 Electrical: 110/1/60, LED light bulbs, all components UL listed



Left: Three-Position Toggle Switch
 Inside Controls
 Middle: Outside Communication Lights
 Interior/Exterior Instructional Signs

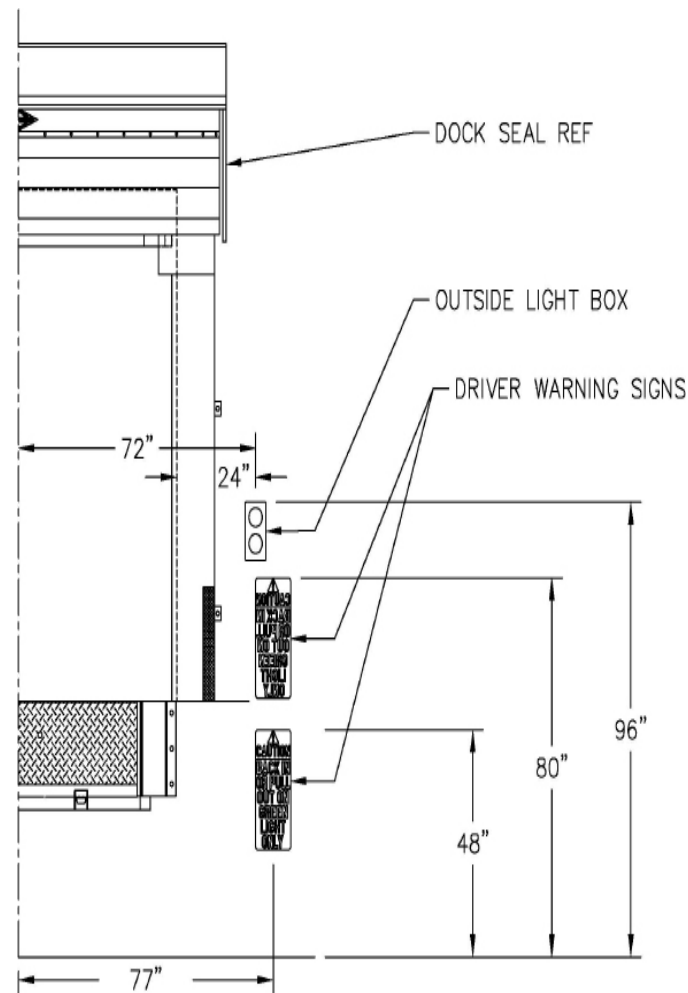
Application Guidelines

1. For non-standard control boxes, electrical requirements or sequence of operations, please consult the Rite-Hite® applications team.
2. Rite-Vu™ products will be packaged independently from restraint control boxes, as standard and ship from Horn Lake, MS 38637
3. Leveler-Vu™ requires minimum 9/16" gap between weatherseal channel and side pit curb steel.
4. Corner-Vu™ and Leveler-Vu™ will match the light operating mode (flashing or solid) which is selectable using Dok-Lok®-Style Light Communication System.

Rite-Vu™ Hazard Recognition and Control Light Communication System

- Traffic-Style Light Communication System
- Dok-Lok®-Style Light Communication System
 - Corner-Vu™**: Provides line of sight light communication system status to dock personnel before entering the trailer.
 - Corner-Vu™ w/ 10 ft. ext. cable
 - Components:** 2 pair of lights, 2 brackets & cables
 - Location:** Each side of interior dock door, upper corners
- Leveler-Vu™**: Provides line of sight light communication system status to the dock personnel while exiting the trailer.
 - Vertical Leveler Leveler-Vu™
- Components:** 2 lights, hardware and cables
- Location:** Each side of dock leveler, rear of leveler pit

Installation



Client Info

Company Name _____

Date _____



RITEVU
www.ritehite.com

8900 North Arbon Drive
 Milwaukee, WI 53223, USA

P 414-355-2600 (800-456-0600)
 F 414-355-9248

Please note: Unless specifically noted on quotation, all electrical, including hook-up, is the responsibility of others. Rite-Hite®, Dok-Lok®, Opti-Vu®, Rite-Vu™, Corner-Vu™ and Leveler-Vu™ are trademarks of Rite-Hite Holding Corporation. Rite-Hite products are covered by one or more U.S. patents with other U.S. and foreign patents pending. The information herein is provided as a general reference only regarding the use of the applicable products. The specifications stated here are subject to change.

Manufactured by Rite-Hite® Products Corporation
 *Opti-Vu® only available in the United States