

R H E

Hydraulic Edge-O-Dock™ Dock Leveler

Ergonomic Push Button Operation

Eliminates manual lifting and chance of injury.

Automatic Return to Dock

Automatically returns lip to stored position when leveler is operated without trailer in place.

Low AMP Powerkit

2" cylinder powered by 115v 5 amp hydraulic motor/pump. Low AMP draw saves in maintenance and operating costs by reducing number of lines required at installation.

Saves Time and Space

Eliminates need to store, find and move portable plates to correct dock positions.

Operating Handle

In case of power failure, unit quickly converts to manual operation. Serves as a maintenance strut.

Easy Replacement

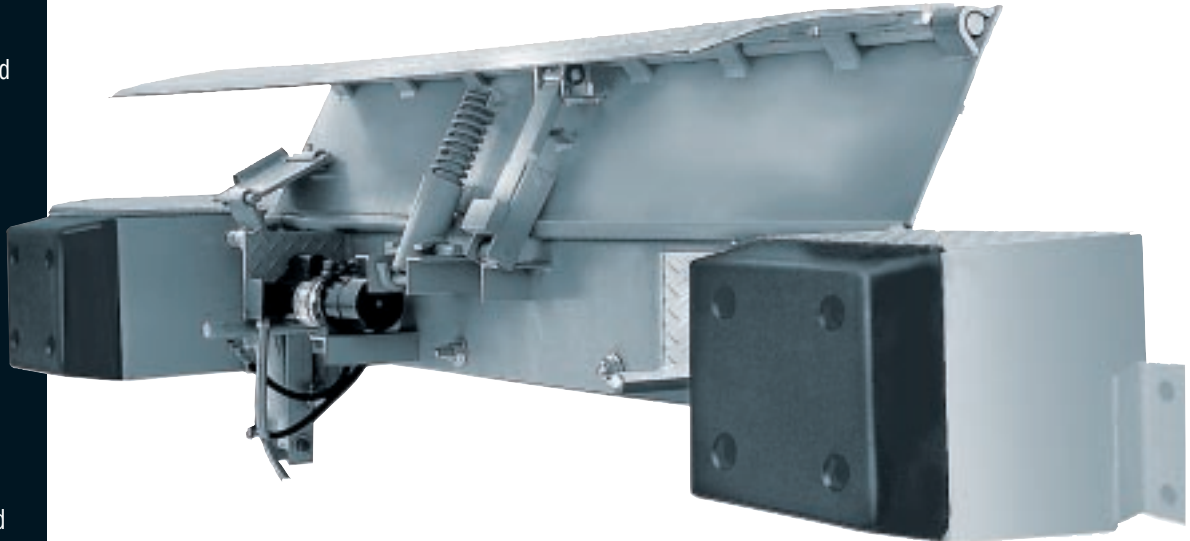
Unique rear hinge design allows for the lip-deck section to be unpinned from the faceplate and replaced with any capacity or length.

Standard Molded Bumpers

Mounted to steel box frames extending 16" from dock.

Grease Fittings

Increases ease of operation.



Ideal for docks servicing trucks with minimal height difference, or where space is a problem.



◀ Power-Up and Power-Down push buttons gives full control and increased safety.

▶ Optional Dok-Lok® Vehicle Restraint



RITE-HITE®

SPECIFICATIONS

RHE

STEELSAFE® CONSTRUCTION:

All steel construction using high strength low-alloy steel for structural members.

DECK AND LIP:

3/8" to 5/8" thick (depending on capacity) high strength low alloy steel (55,000 psi minimum tensile strength). Lip is beveled for smooth transition.

PROJECTIONS:

Bumpers: 16"
Ramp: 13" in stored position
Standard Lip: Extends 12" beyond bumpers
14" lip for refrigerated trucks available

CAPACITIES:

20, 30 and 40,000 lbs.*

HEIGHT DIFFERENTIAL:

Capable of serving trucks 5" above and 5" below dock level.*

HYDRAULIC POWERKIT:

A 2" bore double acting cylinder with 1" diameter chrome plated piston rod is powered by 100 CIPM bi-directional pump.

MOTOR:

110v/1ph/60Hz 5 amp load. Available in 240 and 480 VAC.

MODELS*:

	66" wide	72" wide	78" wide	84" wide
20,000 lb. Capacity*				
12" Lip Projection	RHE6620	RHE7220	RHE7820	RHE8420
14" Lip Projection	RHE6620L	RHE7220L	RHE7820L	RHE8420L
30,000 lb. Capacity*				
12" Lip Projection	RHE6630	RHE7230	RHE7830	RHE8430
14" Lip Projection	RHE6630L	RHE7230L	RHE7830L	RHE8430L
40,000 lb. Capacity*				
12" Lip Projection	RHE6640	RHE7240	RHE7840	RHE8440
14" Lip Projection	RHE6640L	RHE7240L	RHE7840L	RHE8440L

* Due to the limited length of EOM levelers, its structure is subjected to greater dynamic load than on longer levelers. Capacities are based on ideal operating conditions (i.e. maximum gross load traveling at 3mph on 10% grade or less); if the application exceeds this condition a higher capacity leveler must be selected.

GUARANTEE:

Guaranteed against defects in workmanship and materials for (1) year from date of sale. We reserve the right to change specifications without notice.

CONTROLS:

Power up and power down is achieved through two (2) momentary contact push buttons.

OPTIONS:

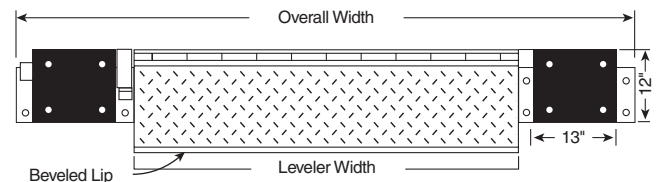
1. Post Office Model with 2" cart stop.
2. Model for pit installation.
3. Special widths.
4. Hot dipped galvanized (six week lead time).

ACCESSORIES:

1. Treaded transition plate (for mounting where sufficient dock edge steel is not present).
2. Approach ramp (to be used in overcoming excessive height differential).

OPERATION:

1. Simple push button (up/down) operation with automatic lip extension.
2. When truck pull away, unit returns to stored position.
3. Unit can be returned to stored position with truck in place.
4. Lip will not stay extended without truck in place.



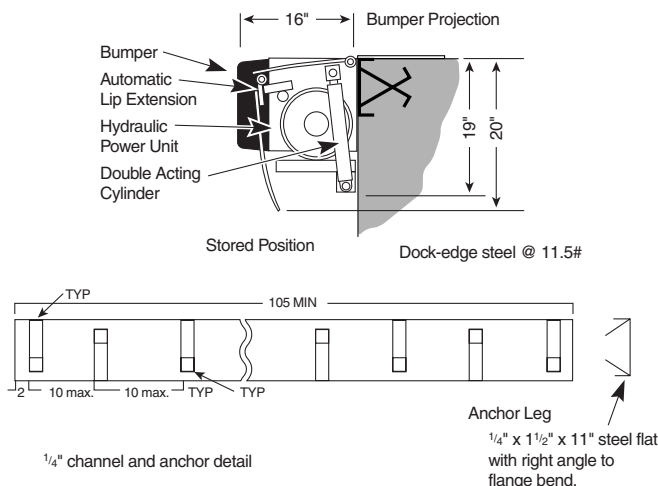
LEVELER WIDTH:

OVERALL WIDTH:

66" wide	102" wide
72" wide	108" wide
78" wide	114" wide
84" wide	120" wide

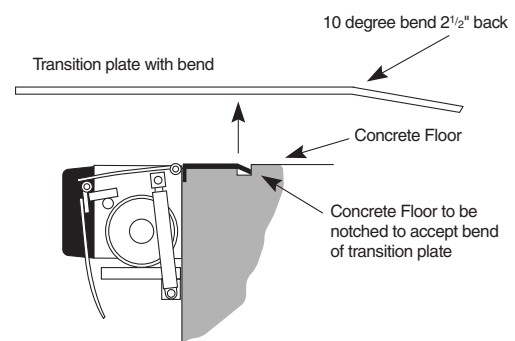
#1 NEW CONSTRUCTION:

Standard installation with poured in place curb channel.



#2 EXISTING CONSTRUCTION:

Transition plate required for existing construction with curb angle or no angle.



#3 PIT INSTALLATION:

Please contact a Rite-Hite Representative for details.