

# SplitSecond™ Series High Performance Doors

Split-center design. Split-second performance. Rite-Hite® SplitSecond high performance industrial door boosts efficiency, productivity and safety in a simple, reliable, compact design.

## Split-center design

Bi-parting door features spring tube design to collect the curtain in the side frames.

## Accelerated thinking

Variable frequency drive for an unmatched peak speed of up to 120"/sec (3 m/sec).

## Safer work environments

Two large vision windows and immediate top to bottom visibility decreases blind spots.

## Compact side frames

Powder coated steel side frames.

## Superior auto reverse

Obstruction sensing reversing system uses 3 photo eyes and a torque sensor.

## Impact protection

Flex design curtain reduces downtime and damage from accidental impacts.

## Communication

Rite-Hite Doors has a series of light communication products to help reduce common collision accidents between forklifts and pedestrians. LED Countdown, LED Pre-Announce and LED Virtual Vision available.



Vision panels



Graphic User Interface

# Specifications

## Speed

Peak speed up to 120"/sec (3 m/sec) with standard variable frequency drive. Top speed is dependent on door size.  
Closing speed 40"/sec (1 m/sec)

## Size

**Minimum** – 5'0" w x 7'0" h (1524 mm x 2134 mm)

**Maximum** – 12'0" w x 12'0" h (3658 mm x 3658 mm)

**SplitSecond Cleanroom Maximum** - 10'6" x 11'6"  
(3200 mm x 3505 mm)

## Curtain material

- » 40 oz. PVC in blue or white
- » Optional replaceable bottom seals
- » Large clear vision

## Side frames and header cover options

- » Powder coated steel

## Electrical Requirements

- » **Single-phase:** 220V-240V
- » **Three-Phase:** 208V, 230V, 400V, 460V, 575V

## Graphic User Interface (GUI)

Industry's only 7" (178 mm) LCD touch screen interface that provides increased safety by allowing an individual to simply access the control box settings without wearing the necessary PPE often required for accessing a live electrical panel.

## Control box

- » i-COMM™ 3 Digital Controller, variable frequency drive.
- » Pre-wired and factory tested.
- » Standard fiberglass NEMA 4X.

## Safety features

Three thru-beam photo eyes mounted at 18" (457 mm), 36" (914 mm) and 54" (1372 mm) from the floor and obstruction sensing reversing system. Bi-part design provides enhanced visibility.

Non Powered Opening Option – Allows the door to be opened in the event of an emergency or power outage.

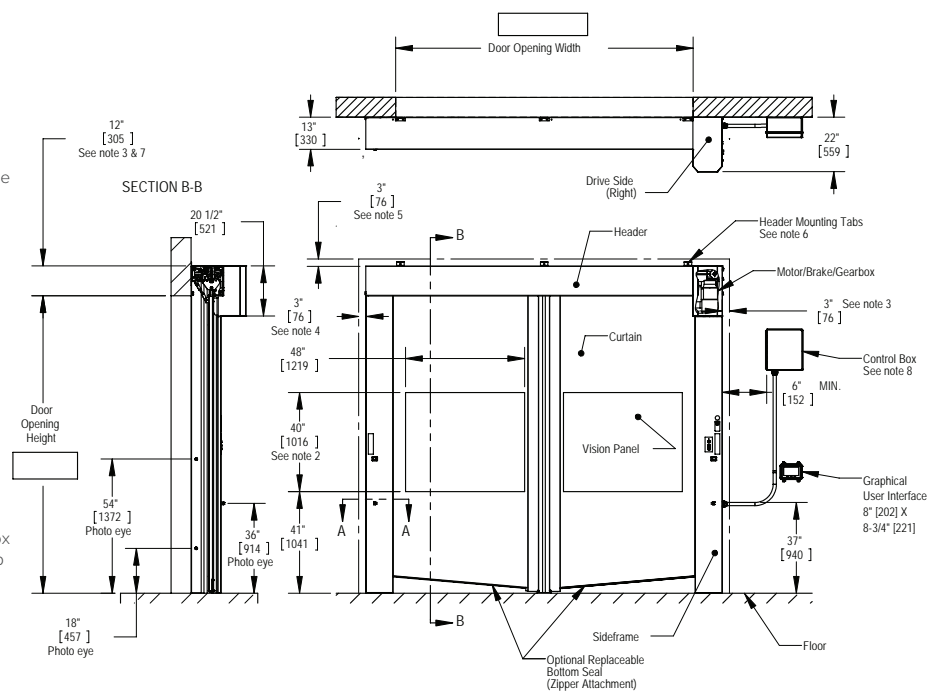
## Warranty

Five (5) Year for motor, brake and gearbox.  
Two (2) Year on all mechanical and electrical parts.  
One (1) Year labor.

## SPLITSECOND™

### Notes:

1. Alternate dimensions in brackets are in millimeters.
2. Vision height is 32" [813] for doors less than 8'0" [2438].
3. Motor shroud requires min. 3" [76] of side clearance for access.
4. Recommended sideframe installation clearance is 3" [76].
5. Header shroud requires min. 3" [76] of top clearance for installation.
6. Mounting tabs require 3" [76] of clearance above shroud. For sloped shroud option, tabs are located under shroud. Tabs can be relocated if required.
7. Optional sloped shroud increases finished header clearance to 15" [381] above door opening height, +3" [76] additional required for installation.
8. Fiberglass Control Box (std.) 14" [356] x 16" [406] x 8" [203], Stainless Control Box (opt.) 16" [406] x 19" [482] x 8" [203]. Step down transformer provided with 575V controls 9" [229] x 10" [254] x 7" [178].



D20SSECSS0219H1

8900 North Arbon Drive  
Milwaukee, WI 53223, USA

P 414-355-2600 (800-456-0600)

F 414-355-9248

Rite-Hite®, SplitSecond™, i-COMM™ are trademarks of the Rite-Hite Holding Corporation. Rite-Hite products may be covered by one or more U.S. Patents with other U.S. and foreign patents pending. Rite-Hite reserves the right to make product improvements without prior notice.  
Manufactured by: Rite-Hite Industrial Door Corporation.

[www.ritehite.com](http://www.ritehite.com)