

LiteSpeed® Cleanroom High Performance Doors

From the soft bottom edge and ultra tight seal, to the simple, low-maintenance design platform, the LiteSpeed Cleanroom has become the new standard for safe, clean, reliable performance for clean rooms.

An edge on safety

No hidden metal or plastic support. No buried electrical wiring. 100% fabric for a softer, safer cushion. And a higher degree of protection for product, personnel and equipment.

Wireless Interlocking available

Wirelessly interlock up to (15) Rite-Hite Doors without the expense and hassle of hard wiring.

TRUE Auto Re-feed™

For automatic re-feeds, on the fly, with no human interaction. Impacts won't impact production.

Strong, silent type

Powerful 1 HP motor and variable frequency drive system combine for class-leading speed and super-quiet performance.

The speed advantage starts with installation

Comes fully pre-wired and tested from the factory. Reduces electrical installation by up to two hours. We offer wireless interlocking for multiple doors.

Fewer moving parts

Less maintenance keeps downtime to a minimum. Less really is more.

Smaller footprint

Compact stainless steel side frames for a cleaner look. Ideal for installation in tighter spaces.

Tough PVC vinyl curtain

Completely heat sealed. Complies with FDA and GMP guidelines.

Reversing slack sensor

Reverses the door's travel when an obstruction is sensed.

Smart, Connected Capabilities

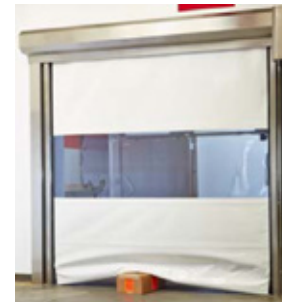
Rite-Hite provides smart, connected capabilities as part of the Rite-Hite Extended Warranty. Facilities gain visibility into their doors productivity and maintenance, helping to increase safety through the Rite-Hite Digital Platform.



Graphic User Interface (GUI)
Flush Mounted



LED Countdown



Soft Bottom Edge

Specifications

Speed

- » Peak speed up to 65" (1.65 m/sec) with standard variable-frequency drive
- » Closing speed 30" (0.76 m/sec)

Size

- » **Minimum:** 3'0" x 3'0" (914 mm x 914 mm)
- » **Maximum:** 12'0" x 12'0" (3657 mm x 3657 mm)

Curtain Material

- » 27 oz. vinyl, Standard Color: Blue – other colors Gray, White, & Red available upon request
- » 30 oz. urethane, Optional – available colors in Blue & Carbon

Side Frames

- » Stainless steel – 3 3/4" wide x 2 1/8" projection (95 mm x 53 mm)

Drive System

1 HP (0.75 kW) motor, variable-frequency drive, torque absolute encoder

Electrical Requirements

- » **Single-phase:** 220V-240V
- » **Three-Phase:** 208V, 230V, 400V, 460V, 575V

Graphic User Interface (GUI)

Industry's only 7" (178 mm) LCD touch screen interface that provides increased safety by allowing an individual to simply access the control box settings without wearing the necessary PPE often required for accessing a live electrical panel.

Control box

- » i-COMM™ 3 Digital Controller, variable frequency drive.
- » Pre-wired and factory tested.
- » Standard fiberglass NEMA 4X, optional stainless steel NEMA 4X.

Curtain Retention

- » Standard pressure retention up to 0.2 in – H₂O (50 pascals).
- » Includes TRUE Auto Re-feed system in case of accidental impacts to curtain.

Safety Features

Soft Breakaway Technology thru-beam photo eye at 18" (457 mm) off the floor, reversing sensor.

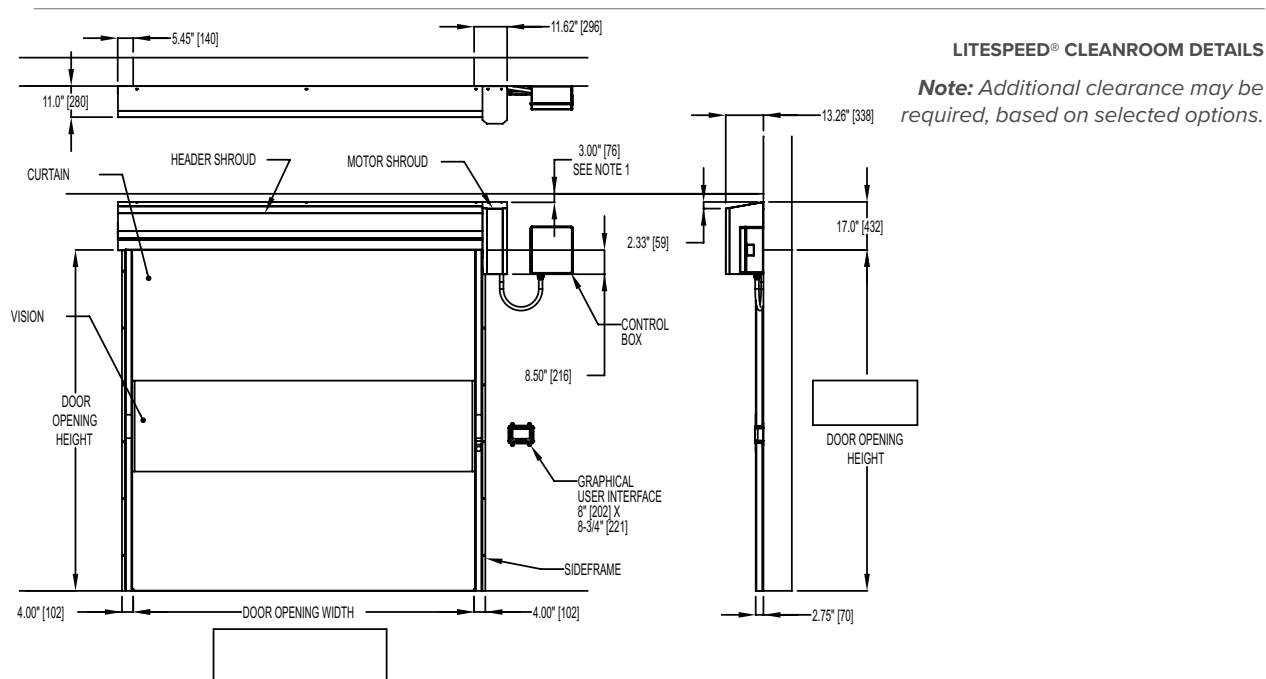
Optional – Virtual Vision™, non-power opening, motion and presence sensors.

Limited warranty

Five (5) Year for motor, brake and gearbox.
Two (2) Year on all mechanical and electrical parts.
One (1) Year labor.

Rite-Hite extended warranty

Seven (7) Year drive system.
Three (3) Year fabric/panel, electrical & mechanical.
Two (2) Year labor.



RITEHITE
ALWAYS LOOKING AHEAD

Milwaukee, Wisconsin, USA
www.ritehite.com

P 414-355-2600 (800-456-0600)
F 414-355-9248

Rite-Hite®, LiteSpeed®, TRUE Auto Re-feed™, i-COMM™ are trademarks of the Rite-Hite Holding Corporation. Rite-Hite products may be covered by one or more U.S. Patents with other U.S. and foreign patents pending. Patent coverage: www.ritehite.com/patents. The information herein is provided as a general reference only regarding the use of the applicable products. The specifications stated here are subject to change. Manufactured by Rite-Hite Doors, Inc.