

VertiGuard™

Machine Guarding Barrier

PROTECT EMPLOYEES

The VertiGuard is a unique bottom-up pneumatic panel that provides physical separation between machine operators and manufacturing processes. An alternative to light curtains or area scanners, the VertiGuard is ideal in applications where the point of operation exposes the operator to potential injury. Applications include robotic work cells, paper converting/printing machinery, plastics machinery, small parts assembly, conveyor openings and anywhere machine safety is required.



Pneumatically Operated – Engineered for millions of cycles.

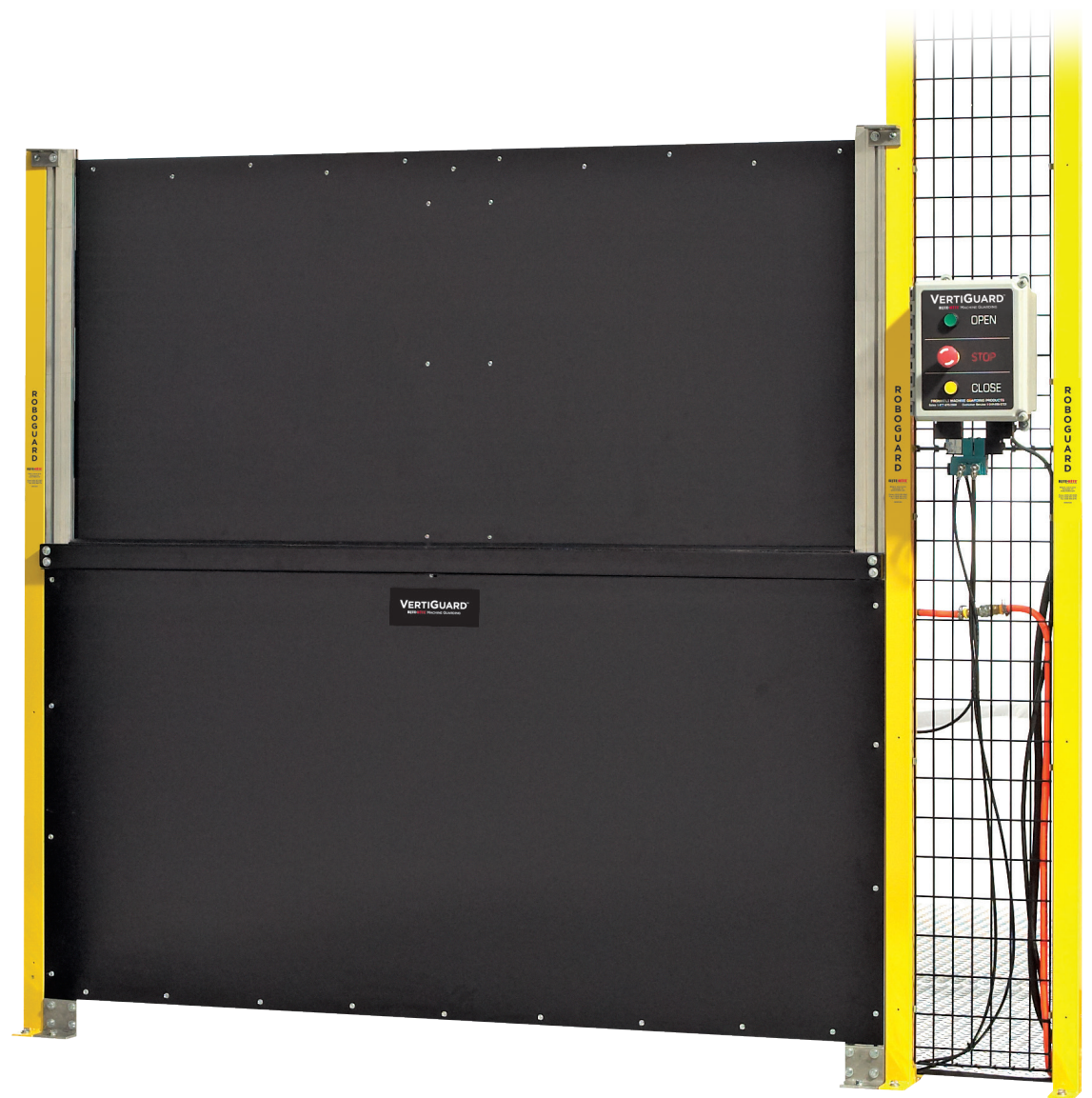
Fully Assembled – Easy to install and maintain.

Optional PLe/Cat. 4 Switches – Per EN ISO 13849-1, meet the latest safety specifications.

Automated to the Process – Increases productivity.

Guards machinery.

Protects machine operators.

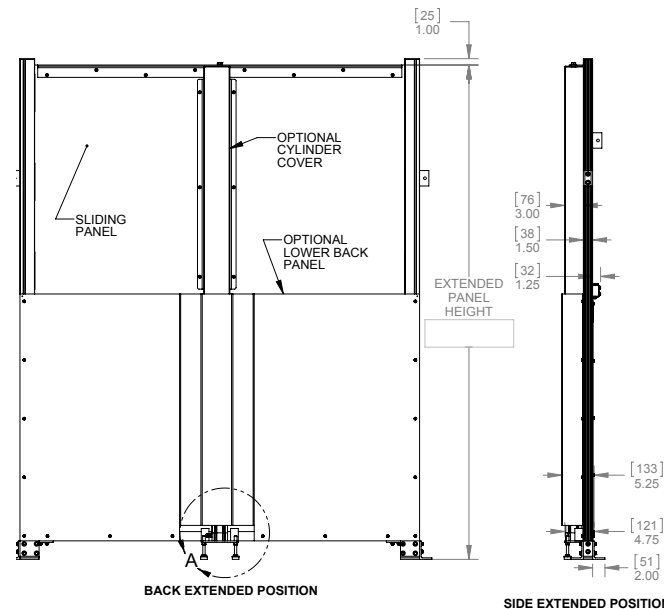
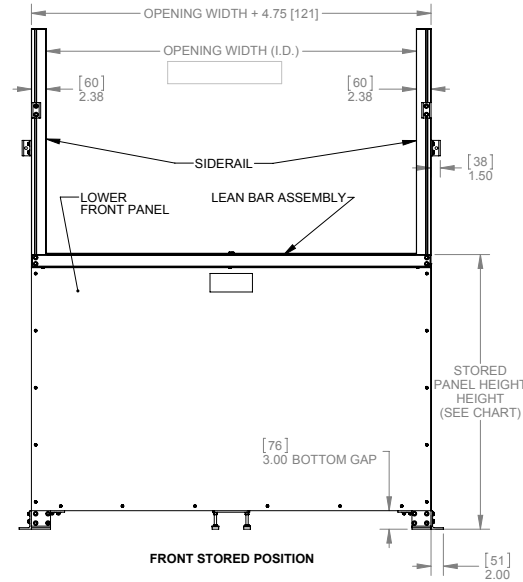


800-553-5560 | www.ritehite.com

RITEHITE
ALWAYS LOOKING AHEAD

Specifications:

Model Number	VGRD - VertiGuard Machine Guarding Door
Size Limits	Minimum opening width 1' - 1" [330 mm] Maximum opening width 9' - 2" [2794 mm] Minimum extended panel height 2' - 0.5" [876 mm] Maximum extended panel height 8' [2438 mm]
Sliding Panel Material	Standard 16 ga. galvanized steel Optional 16 ga steel powder coated yellow or black
Lower Front Panel Material	Standard 16 ga. galvanized steel Optional 16 ga steel powder coated yellow or black
Optional Lower Back Panel Material	Standard 16 ga. galvanized steel Optional 16 ga steel powder coated yellow or black
Optional Cylinder Cover Material	Standard 14 ga. galvanized steel Optional 14 ga steel powder coated yellow or black
Cylinder	2" [50 mm] bore, double acting Automatically adjusting cushioning
Hose	.25" [6.35 mm] flame retardant black polyethylene
Side Frame Material	1.5" x 2.375" [38 mm x 60 mm] aluminum extrusion
Frame Material	All aluminum construction
Speed	Adjustable (dependent on air system and pressure)
Mounting Styles	Standard: (2) face/injamb mounts Optional: specified additional quantity of face/injamb mounts and/or front/back floor mounts and/or side floor mounts
Controls	Junction box size, 10.5" x 8.5" x 6.25" [277 mm x 216 mm x 159 mm], (24 DC or 110 AC) with terminal blocks and (24 VDC or 110 VAC) 4 way control valve Control box size, 10.5" x 8.5" x 6.25" [277 mm x 216 mm x 159 mm], 110 AC with open, stop, and close pushbuttons with 110 VAC 4 way control valve
Limited warranty	Two (2) Year on all mechanical and electrical parts, including panels. One (1) Year for drive system.



With Bottom Gap
Stored Panel Height
22.375" [568 mm]
28.375" [721 mm]
34.375" [873 mm]
40.375" [1026 mm]
46.375" [1178 mm]
52.375" [1330 mm]

Extended Panel Height
36" [914 mm]
48" [1219 mm]
60" [1524 mm]
72" [1829 mm]
84" [2134 mm]
96" [2438 mm]

Stored Panel Height =
(Extended Panel Height / 2)
+ 4.375" [111 mm]

Without Bottom Gap
Stored Panel Height
21" [381 mm]
27" [533 mm]
33" [686 mm]
39" [838 mm]
45" [991 mm]
51" [1143 mm]

Extended Panel Height
36" [914 mm]
48" [1219 mm]
60" [1524 mm]
72" [1829 mm]
84" [2134 mm]
96" [2438 mm]

Stored Panel Height =
(Extended Panel Height / 2)
+ 3" [76 mm]



MG23VGS0110H1

Milwaukee, Wisconsin, USA

www.ritehite.com

P 414-355-2600 (800-456-0600)

F 414-355-9248

Rite-Hite®, VertiGuard™, Rite-Hite Guard & Protect™ and Rite-Hite Machine Guarding™ are trademarks of Rite-Hite Holding Corporation. Rite-Hite products are covered by one or more U.S. patents with other U.S. and foreign patents pending. Patent coverage: www.ritehite.com/patents. The information herein is provided as a general reference only regarding the use of the applicable products. The specifications stated here are subject to change. Manufactured by Rite-Hite Doors, Inc.