

Barrier Glider® Cold Storage Door - Bi-Parting

The Barrier Glider improves on the technology of traditional cold storage doors to deliver more value at your temperature controlled openings.

Iso-Tek® panel construction is combined with the Thermal-Flex Sealing System to help you achieve superior environmental separation at your opening with lower energy costs.

Flexible Iso-Tek® panels deliver superior environmental separation and increased impactability.

Simple, straightforward design provides long-term performance.

High speed operation maximizes the time the door is closed to help reduce energy costs.

Energy efficient design reduces heat gain into cold storage areas, lowers energy costs.

Panels seal tight against wall, yet release upon impact with unique panel retention system.



Thermal-Flex Sealing System

provides a warm flexible seal while using a fraction of the energy of other door systems.

Opti-Vu
BY RITE-HITE

An intuitive digital tool for data-driven decision making

More than just sensors and data, the Opti-Vu™ platform monitors equipment, captures events, synchronizes vital information and facilitates data-driven behavioral and process change (subscription & additional hardware required).



Panel Retention System



Flexible, Impactable R-10 panels

Specifications

Speed

- » **Opening:** up to 80" per second (1.52 m/s)
- » **Closing:** 30" per second (0.76 m/s)

Size

- » **Bi-parting door**
 - Minimum** – 6' w x 8' h (1828 mm x 2440 mm)
 - Maximum** – 12' w x 20' h (3657 mm x 6096 mm)
- » **Available also in Single Slide door**

Temperature range

-20° to +120° F (-29° to 49° C)

Panel design

Flexible, impactable R-10 panels are 3" (76 mm) thick with insulating foam core. Panels covered with 30 oz. gray (optional white panels) polyurethane fabric. Optional 4-pane vision panels are 14" x 32" (355 mm x 812 mm). Panel retention system keeps panels tight against seals, yet allows panels to swing away from the wall upon impact and automatically reset.

Graphic User Interface (GUI)

Industry's only 7" (178 mm) LCD touch screen interface, that displays real time door status, and provides increased safety by allowing an individual to simply access the control box settings without wearing the necessary PPE often required for accessing a live electrical panel.

Control box

- » i-COMM™ 3 Digital Controller, variable frequency drive.
- » Pre-wired and factory tested.
- » Standard fiberglass NEMA 4X.

Electrical requirements

- » **Single-Phase** – 220V-240V
- » **Three-Phase** – 208V, 230V, 400V, 460V, 575V

Thermal-Flex Sealing System

Consists of a heated perimeter seal heated floor seal and thick insulated seal nose. (Optional: heated nose seal).

Header/trolley assembly

Track constructed of heavy gauge round tubing to provide large wear surface for the trolley's urethane rollers. Hourglass-shaped rollers allow panel to rotate on the track for enhanced panel impactability. Vertical support posts constructed of 1" x 3" (25 mm x 76 mm) 11 ga steel tubing.

Drive system

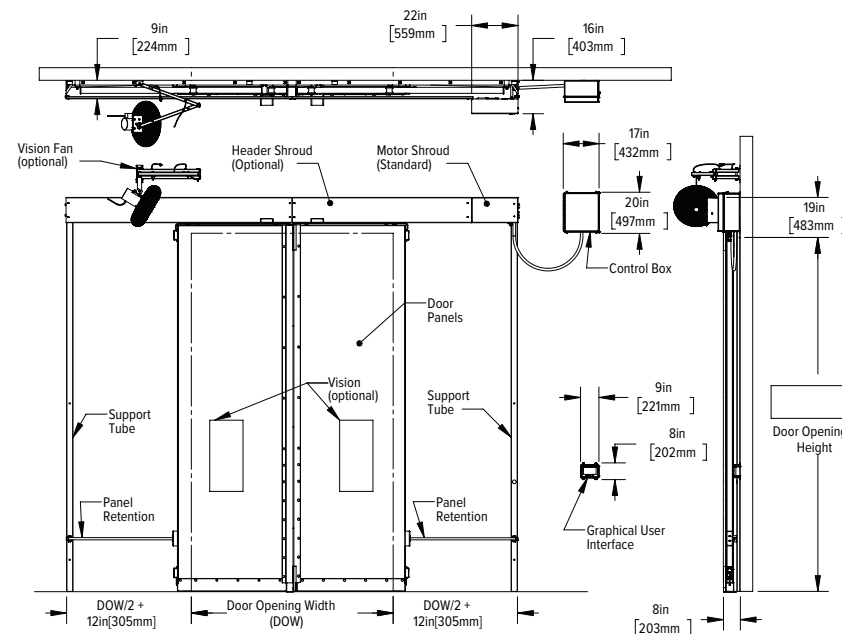
1 HP AC motor with a power on brake. The beveled gearbox can be back driven in the event of a power outage, which will disengage the brake, and allow the panels to be manually opened and closed.

Safety features

Quick operation helps prevent impact. Flexible panels, panel retention system and tubular track/roller system help prevent impact damage. Automatic reversing when obstruction is encountered in opening, without use of reversing edge. Optional vision panels.

Limited warranty

Five (5) Year for motor, brake and gearbox.
Two (2) Year on all mechanical and electrical parts.
One (1) Year labor.



D20BGPSS0121G1

8900 North Arbon Drive
Milwaukee, WI 53223, USA

P 414-355-2600 (800-456-0600)

F 414-355-9248

Rite-Hite®, Barrier®, Iso-Tek®, i-COMM™ and Opti-Vu™ are trademarks of the Rite-Hite Holding Corporation. Rite-Hite products may be covered by one or more U.S. Patents with other U.S. and foreign patents pending. Rite-Hite reserves the right to make product improvements without prior notice. Manufactured by: Rite-Hite Industrial Door Corporation and Rite-Hite Digital Solutions.

www.ritehite.com