



# FasTrax<sup>®</sup> FR Cold Storage Doors

Combining the unique Thermal-Flex Sealing System with the InsulMax R-4 curtain provides an innovative, energy-efficient high performance cold storage door. The choice is easy.

## Simple design and easy choice for almost any opening

Available with a standard lift, high lift, full vertical, wrapback and custom track configurations, FasTrax FR fits almost any opening with fewer costly building modifications.

## Reinventing the wheel

The heart of every FasTrax door, the drive system powers the door up and down without the need for counterweights, springs or pulleys.

## Industry's highest operating speeds

Operating speeds up to 100" per second (2.5 m/sec) allows fast cycle times that increase productivity.

## Communication

Rite-Hite Doors has a series of light communication products to help reduce common collision accidents between forklifts and pedestrians. LED Countdown, LED Pre-Announce and LED Virtual Vision available.

## Maximum uptime, minimum maintenance

Fewer moving parts mean fewer, less costly repairs and reliable, trouble-free performance.

## Industry's safest doors

The only cold storage door that incorporates Soft Breakaway™ Technology.

## TRUE Auto Re-feed™

After an accidental impact, the FasTrax door re-feeds itself on the fly without human intervention, keeping your door closed and downtime to a minimum.

## Superior full-perimeter seal

Reduces the need for heat lamps and air curtains which can be costly to operate.



InsulMax curtain



Graphic User Interface



LED Countdown

# Specifications

## Speed

Up to 100"/sec (2.5 m/sec) with standard variable frequency drive. Top speed is dependent on door size.

## Size

**Minimum** – 3'0" w x 3'0" h (914 mm x 914 mm)

**Maximum** – 8'3" w x 13'3" h (2514 mm x 4038 mm)

\*\*See FasTrax FR LD for larger door sizes\*\*

## Curtain material

InsulMax – 1" (25 mm) of polyester insulation placed between two layers of 30 oz. urethane

## Side frames

Powder-coated aluminum extrusion, 4½" wide x 4¾" projection (114 mm x 120 mm)

## Drive system

2 HP (1.5 kW) motor, variable frequency drive, cushioned motor mounts, drive gear, drive spheres and a composite-edge material which is attached to the curtain.

## Electrical requirements

**Single-phase:** 220V – 240V

**Three-phase:** 208V, 230V, 400V, 460V, 575V

## Graphic User Interface (GUI)

Industry's only 7" (178 mm) LCD touch screen interface that provides increased safety by allowing an individual to simply access the control box settings without wearing the necessary PPE often required for accessing a live electrical panel.

## Control box

- » i-COMM™ III Digital Controller, variable frequency drive.
- » Pre-wired and factory tested.
- » Standard fiberglass NEMA 4X.

## Curtain retention

Wear-resistant Lexan wind guides keep tension on the curtain the entire length of the side frame. Standard pressure retention of 0.3 in. H<sub>2</sub>O (75 Pa).

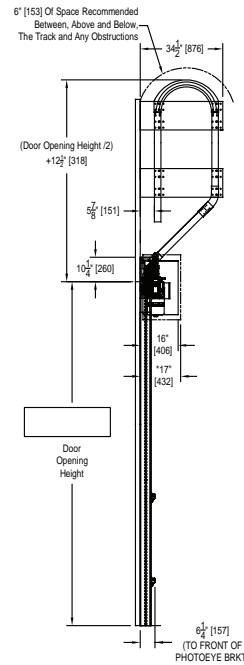
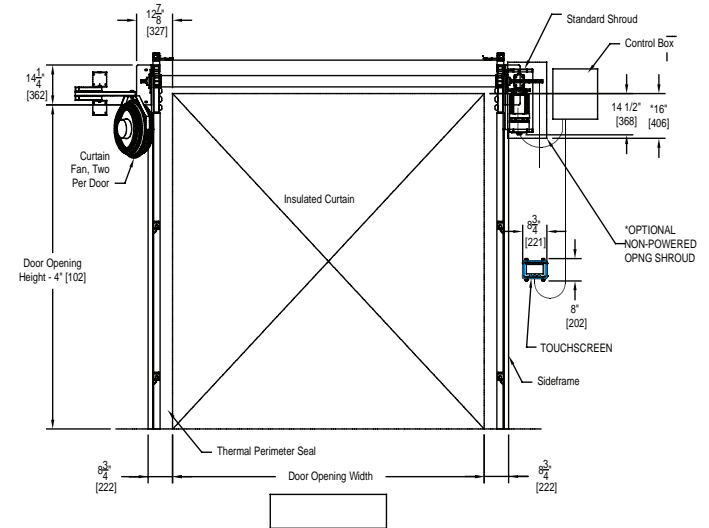
Includes TRUE Auto Re-feed system in case of accidental impacts to curtain.

## Safety features

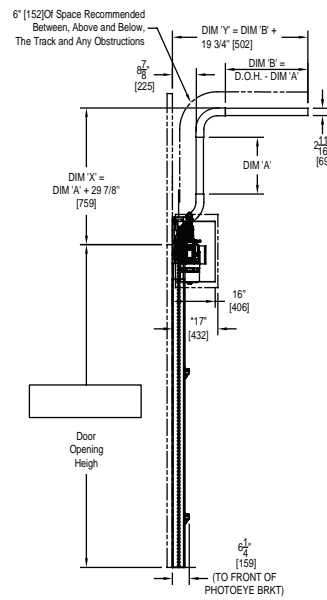
Soft Breakaway™ Technology, two thru-beam photo eyes mounted at 18" (457 mm) and 54" (1371 mm) off the floor.

## Warranty

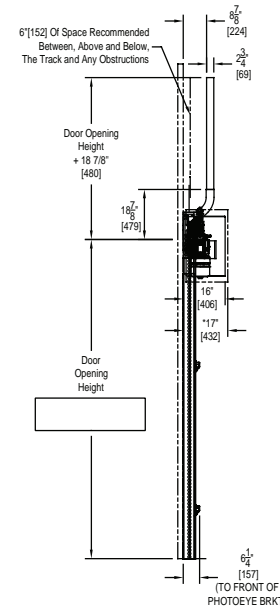
Five (5) Year for motor, brake and gearbox.  
Two (2) Year on all mechanical and electrical parts.  
One (1) Year labor.



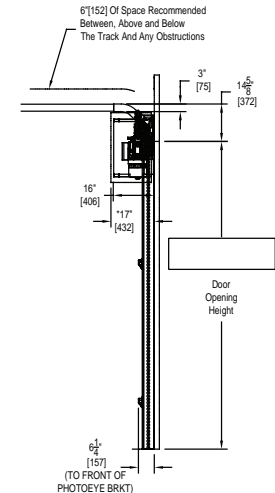
WRAPBACK LIFT



HIGH LIFT



VERTICAL LIFT



STANDARD LIFT



D20FTFRSS1218H1

8900 North Arbon Drive  
Milwaukee, WI 53223, USA

P 414-355-2600 (800-456-0600)

F 414-355-9248

RITE-HITE®, FasTrax®, TRUE Auto Re-feed™, Soft Breakaway™, i-COMM™ are trademarks of the RITE-HITE Holding Corporation. RITE-HITE products may be covered by one or more U.S. Patents with other U.S. and foreign patents pending. RITE-HITE reserves the right to make product improvements without prior notice. Manufactured by: Rite-Hite Industrial Door Corporation.

[www.ritehite.com](http://www.ritehite.com)