



FasTrax[®] Washdown High Performance Doors

The most reliable door just became the cleanest. Rite-Hite's FasTrax Washdown is a full 360° clean.

Simple reliable FasTrax Design

Single operational platform, Traxion Drive System, TRUE Auto Re-feed™ and Soft Breakaway Technology.

Speed runs in the family

Operating speeds up to 100"/sec (2.5 m/sec), twice as fast as most competitive clean doors.

Worry-free washdown

Withstands high-pressure washdown with the harshest cleaning chemicals.

One piece radial header

Machined from a solid block of UHMW plastic to meet USDA and FDA standards. Optional track configurations available.

Noncorrosive Lexan and UHMW side frames

Easily removable for deep cleaning.

Drive system and controls

Designed for heavy washdown.

Resistant door fabric

Polypropylene fabric provides higher resistance to acids and bases, lower water absorption rates and higher resistance to mold than vinyls or urethanes.

Smart, Connected Capabilities

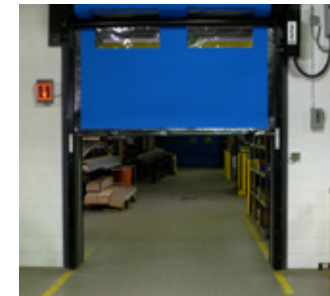
Rite-Hite provides smart, connected capabilities as part of the Rite-Hite Extended Warranty. Facilities gain visibility into their doors productivity and maintenance, helping to increase safety through the Rite-Hite Digital Platform.



Graphic User Interface



Easy to remove side frame



LED Countdown

Specifications

Speed

Peak speed up to 100"/sec (2.5 m/sec) with standard variable frequency drive. Top speed is dependent on door size. Closing speed 20"/sec (0.5 m/sec).

Size

Minimum – 5'0" w x 7'0" h (1524 mm x 2134 mm)

Maximum – 10'0" w x 12'0" h
(3048 mm x 3658 mm)

Curtain Material

PolyPro 100 mil (2.5 mm)

Standard colors: blue, orange, green, gray, red, white and carbon

Side Frames

Stainless steel frame and brackets, Lexan track, UHMW insert.

Drive Systems

Epoxy coated motor, brake, gearbox, 2 HP motor and variable frequency drive. Optional stainless steel motor assembly recommended if caustic or harsh chemicals will be utilized for washdown.

Electrical requirements

Single-phase: 220V-240V

Three-phase: 208V, 230V, 400V, 460V, 575V

Graphic User Interface (GUI)

Industry's only 7" (178 mm) LCD touch screen interface that provides increased safety by allowing an individual to simply access the control box settings without wearing the necessary PPE often required for accessing a live electrical panel.

Control box

- » i-COMM™ 3 Digital Controller, variable frequency drive.
- » Pre-wired and factory tested.
- » Standard fiberglass NEMA 4X, optional stainless steel NEMA 4X.

Curtain Retention

Wear-resistant Lexan wind guides keep tension on the curtain the entire length of the side frame. Standard pressure retention of 0.3 in. H₂O (75 Pa). Includes TRUE Auto Re-feed™ system in case of accidental impacts to curtain.

Safety features

Soft Breakaway Technology, two thru-beam photo eyes mounted at 18" (457 mm) and 54" (1371 mm) off the floor.

Limited warranty

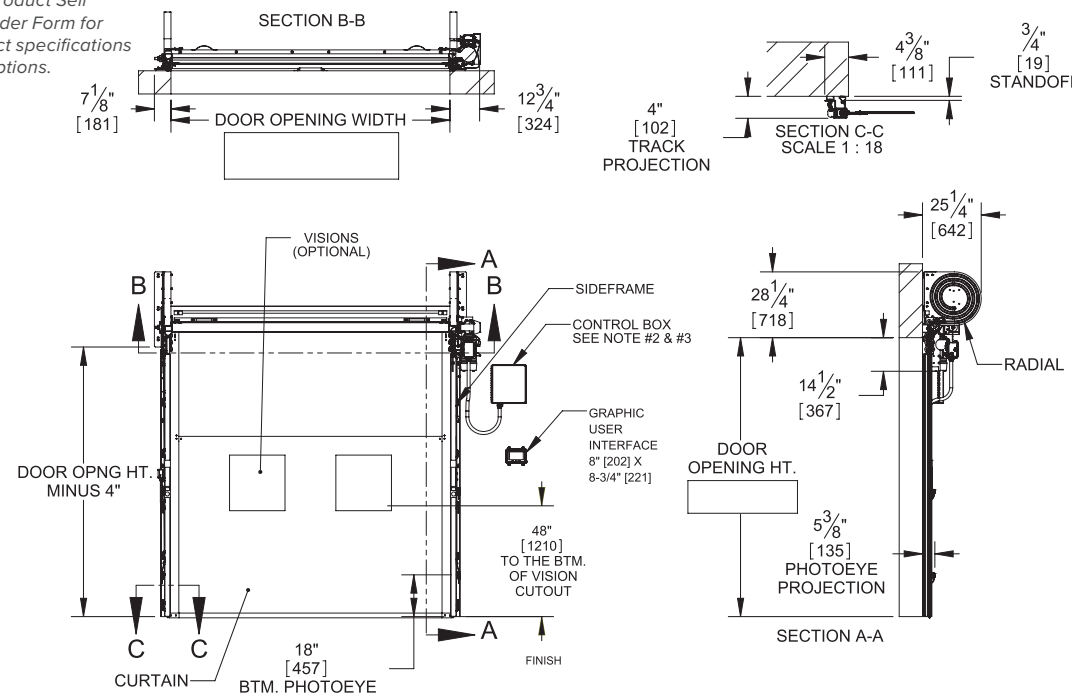
Five (5) Year for motor, brake and gearbox.
Two (2) Year on all mechanical and electrical parts.
One (1) Year labor.

Rite-Hite extended warranty

Seven (7) Year drive system.
Three (3) Year fabric/panel, electrical & mechanical.
Two (2) Year labor.

FASTRAX® WASHDOWN

Note: Consult Product Sell Spec Sheet & Order Form for additional product specifications & all available options.



Milwaukee, Wisconsin, USA

www.ritehite.com

P 414-355-2600 (800-456-0600)

F 414-355-9248

Rite-Hite®, FasTrax®, TRUE Auto Re-feed™, i-COMM™ are trademarks of the Rite-Hite Holding Corporation. Rite-Hite products may be covered by one or more U.S. Patents with other U.S. and foreign patents pending. Patent coverage: www.ritehite.com/patents. The information herein is provided as a general reference only regarding the use of the applicable products. The specifications stated here are subject to change. Manufactured by Rite-Hite Doors, Inc.