

# Raptor Max Series Door

Maximum Safety. Maximum Simplicity. Maximum Smart Technology. Rite-Hite's high performance Raptor Rubber doors come equipped with more controls and operator options than currently on the market, including ability to connect to Opti-Vu™ and Automatic Re-feed™.

## Designed for a wide variety of openings

A single operational platform can be used for interior, exterior and high wind applications.

## Durable, high-density material

A thick 1/4" SBR Rubber curtain incorporating Soft Breakaway Technology helps minimize damage and eliminates downtime from impacts.

## Simplicity made easy

With fewer moving parts, no hinges, cables or counterbalance springs to adjust.

## Curtain Monitoring System

The breakaway detection with our curtain monitoring sensors can detect side frame misfeed or stalled curtain closing and detect door breakaway.

## TRUE Auto Re-feed

After an accidental impact, the Raptor Max rubber door re-feeds itself on the fly without human intervention, keeping your door closed and downtime to a minimum.

## Inherently safer by design

Thanks to soft bottom design and Soft Breakaway Technology, springless design, light curtain and optional laser sensors.



Graphic User Interface (GUI)



**Opti-Vu** An intuitive digital tool for data-driven decision making

More than just sensors and data, the Opti-Vu platform monitors equipment, captures events, synchronizes vital information and facilitates data-driven behavioral and process change (subscription & additional hardware required).

# Specifications

## Speed

Peak speeds up to 30"/sec (1.2192 m/sec) with standard variable frequency drive. Top speed is dependent on door size.

## Size

**Minimum** – 8.0" w x 8'0" h (2438.4 mm x 2438.4 mm)

**Maximum** – 20'0" w x 20'0" h (6096 mm x 6096 mm)

## Curtain material

1/4" SBR Rubber, 2-ply material.

## Side frames

Black painted steel.

## Drive system

Powered Up/Gravity Down Design with Direct Drive Variable Speed Operator (manual chain hoist included).

## Electrical requirements

Three-phase: 230V, 460V, 575V

## Graphic User Interface (GUI)

Industry's only 7" (178 mm) LCD touch screen interface that provides increased safety by allowing an individual to simply access the control box settings without wearing the necessary PPE often required for accessing a live electrical panel.

## Curtain retention

Standard 20 psf static windload. Windload is dependent on door size.

## Safety features

Soft Bottom Design - Soft Breakaway Technology, Light Curtain Detection and Curtain Monitoring Sensors.

## Control box

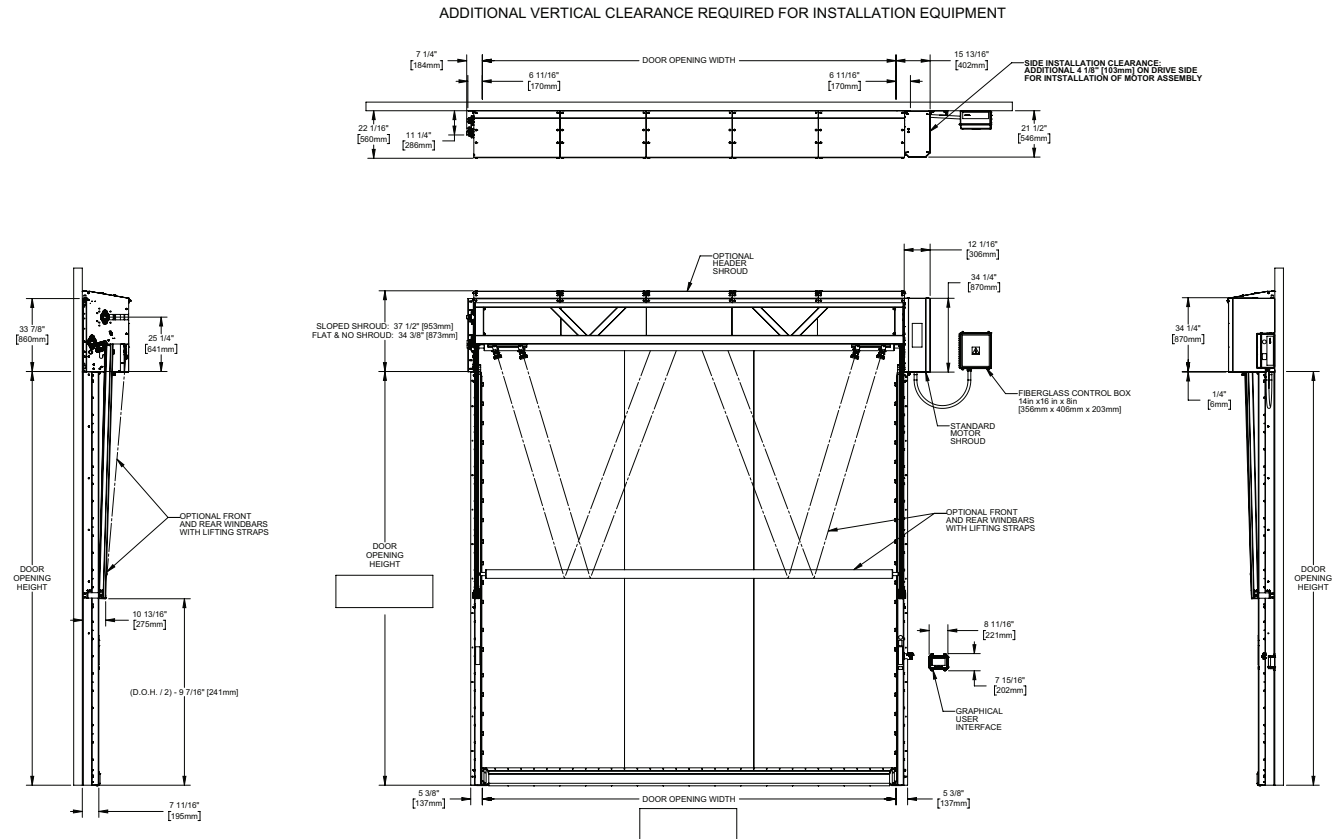
- » i-COMM™ 3 Digital Controller, variable frequency drive.
- » Pre-wired and factory tested.
- » Standard fiberglass NEMA 4X rated enclosure.

## Warranty

Five (5) Year for motor, brake and gearbox.

Two (2) Year on all mechanical and electrical parts.

One (1) Year labor.



D20RRMSS0422G1

8900 North Arbon Drive  
Milwaukee, WI 53223, USA

P 414-355-2600 (800-456-0600)

F 414-355-9248

Rite-Hite® Raptor Rubber Doors, TRUE Auto Re-feed™, i-COMM™ and Opti-Vu™ are trademarks of the Rite-Hite Holding Corporation. Rite-Hite products may be covered by one or more U.S. Patents with other U.S. and foreign patents pending. Rite-Hite reserves the right to make product improvements without prior notice. Manufactured by: Rite-Hite Industrial Door Corporation and Rite-Hite Digital Solutions.

[www.ritehite.com](http://www.ritehite.com)